

[Having trouble reading this email? Click here.](#)



U.S. Wheat and Barley Scab Initiative

# FHB Tool Talk

Dear Extension Specialists, Crop Consultants, and Grower Organizations,

Here at the [U.S. Wheat and Barley Scab Initiative](#) (USWBSI), we take scab seriously. That's why we recommend utilizing the [FHB Risk Tool](#), a map that provides predictions of risk for Fusarium Head Blight (FHB) based on models built using historical weather and disease data.

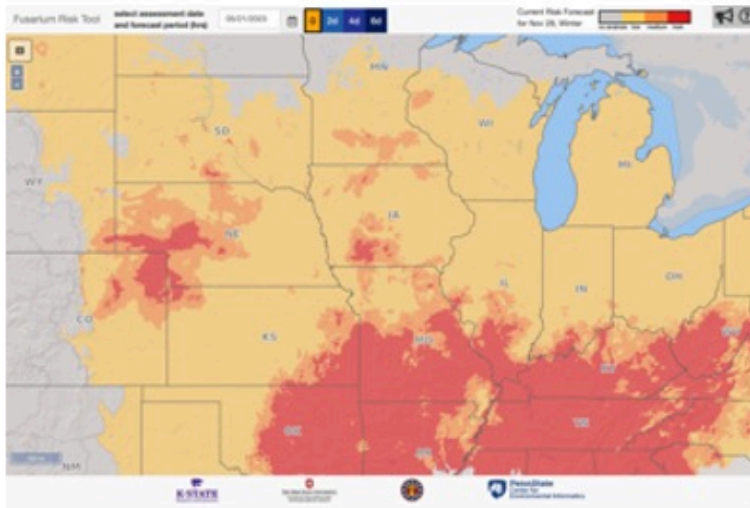
The [FHB Risk Tool](#) is now active for the 2024 growing season. It provides disease risk for both wheat and barley in 35 states. To use the FHB Risk Tool simply select your market class (winter or spring) and susceptibility level of your variety (susceptible, moderately susceptible, or moderately resistant) using the "bulleted list" button located in the top left corner of the map. The map will automatically adjust to the user's selection.

Users can choose a date for the assessment period for FHB and expand that period by 2, 4, or 6 days to view anticipated disease risk trends.

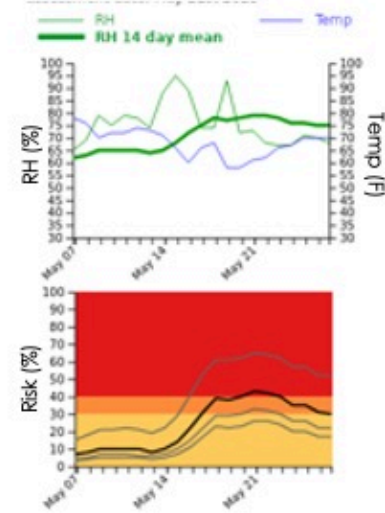
**If the FHB Risk Tool is not loading on your computer**, try disabling your browser's pop-up blocker and reload the webpage.

**Coming soon!** Check back for the most recent update which will include a new graphing feature.

# Enhancements to Model Deployment



[www.wheatscab.psu.edu](http://www.wheatscab.psu.edu)



**Want real-time updates and field reports delivered right to your inbox?** Sign up for [FHB Alerts](#) and receive commentary by state extension specialists either by email or text message (SMS).

**Commentary is customizable.** Subscribe to the “National” region to receive messages regarding the general overview of FHB at the current time. Subscribe to your state’s region to get information from local experts about what’s happening near you.

**Missed an alert or want to read it again?** All previous commentary is provided on the [FHB Alert Blog](#).

Thank you for reading!

If this email was forwarded to you and you would like to receive FHB Tool Talk e-newsletters, [subscribe today!](#)



For more resources about FHB, visit the [Communicators' Tool Kit](#).



---

*Copyright © 2024 U.S. Wheat and Barley Scab Initiative, All rights reserved.*

*U.S. Wheat and Barley Scab Initiative  
495 Borlaug Hall  
1991 Upper Buford Circle  
St. Paul, MN 55108  
nfo@scabusa.org*

FHB Tool Talk is a periodic email sent by the U.S. Wheat and Barley Scab Initiative about information relevant to the current growing season. [Unsubscribe](#) to no longer receive emails from us.