



U.S. Wheat and Barley Scab Initiative

FHB Tool Talk

Dear Extension, Crop Consultants, and Grower Organizations,

Do you every find yourself wondering whether Fusarium Head Blight (FHB) will damage your farm or negatively influence the profitability of your organization? Here at the [U.S. Wheat and Barley Scab Initiative](#) (USWBSI), we take the risk of disease seriously. That's why we recommend utilizing the [FHB Risk Tool](#), a map that provides predictions of the risk for FHB based on models built using decades of research results collected by the USWBSI.

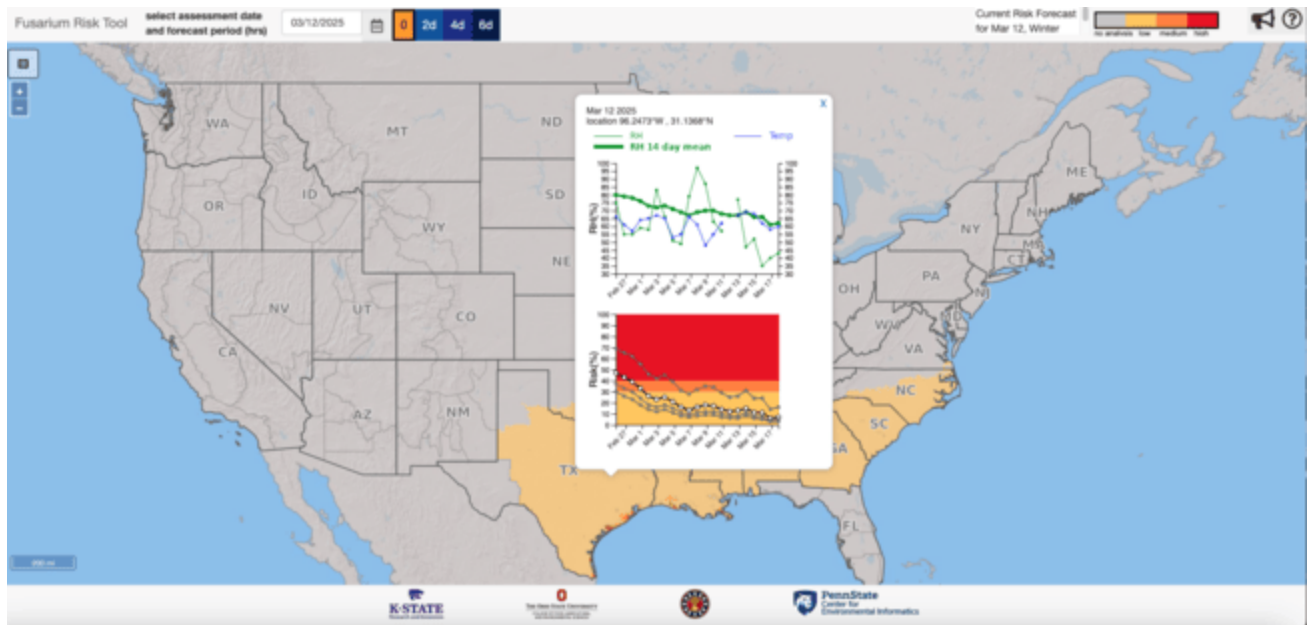
[Based on survey results](#), **89% of users** indicate that the FHB Risk Tool assisted in increasing their profitability by helping them make informed fungicide application decisions.

The [FHB Risk Tool](#) is now active for the 2025 growing season. It provides daily estimates for wheat in 35 states. To use the FHB Risk Tool, simply select your market class (winter or spring) and susceptibility level of your variety (susceptible, moderately susceptible, or moderately resistant) using the "bulleted list" button located in the top left corner of the map. The map will automatically adjust the disease risk to account for the user's selections.

Users can also expand the estimate to consider the potential impact of future weather in disease risk. These features allow users to view anticipated disease risk trends 2, 4, or 6 days in advance.

If the FHB Risk Tool is not loading on your computer, try disabling your browser's pop-up blocker and reload the webpage.

The FHB Risk Tool was recently updated with **new graphing features**. Selecting any location on the map will activate graph panels that display recent trends in weather and disease risk.



Want real-time updates and field reports delivered right to your inbox? Sign up for [FHB Alerts](#) and receive commentary by state extension specialists either by email or text message (SMS).

Commentary is customizable. Users will be automatically subscribed to the "National" commentary which provides a general overview of FHB at the current time as well as general system updates. Subscribe to your state's region to get information from local experts about what's happening near you.

Missed an alert or want to read it again? All previous commentary is provided on the [FHB Alert Blog](#).

[Thank you for reading! Feel free to forward this message to your community. Want to receive FHB Tool Talk e-newsletters? Subscribe today!](#)



More FHB Resources for [Extension, Crop Consultants, and Grower Organizations](#).

Copyright © 2025 U.S. Wheat and Barley Scab Initiative. All rights reserved.

*U.S. Wheat and Barley Scab Initiative
495 Borlaug Hall
1991 Upper Buford Circle
St. Paul, MN 55108
nfo@scabusa.org*

Want to change how you receive these emails?

[Update subscription preferences](#). [Unsubscribe](#) to no longer receive emails from us.

